



# The Center for Discovery: Technology and QI/CC

Jaclyn McKenna, BA

Chief of QI/CC and Adult Continuous Program Development

The Center for Discovery

Technology and QI/CC

# Project LifeSaver



Technology and QI/CC

# Project LifeSaver



Technology and QI/CC

# Project LifeSaver



# Project LifeSaver

- Less invasive than GPS
- Wristband cannot be removed; HRC needed

## **Headquarters & Special Projects Division**

201 SW Port St. Lucie Blvd Suite 203

Port St. Lucie, FL 34984

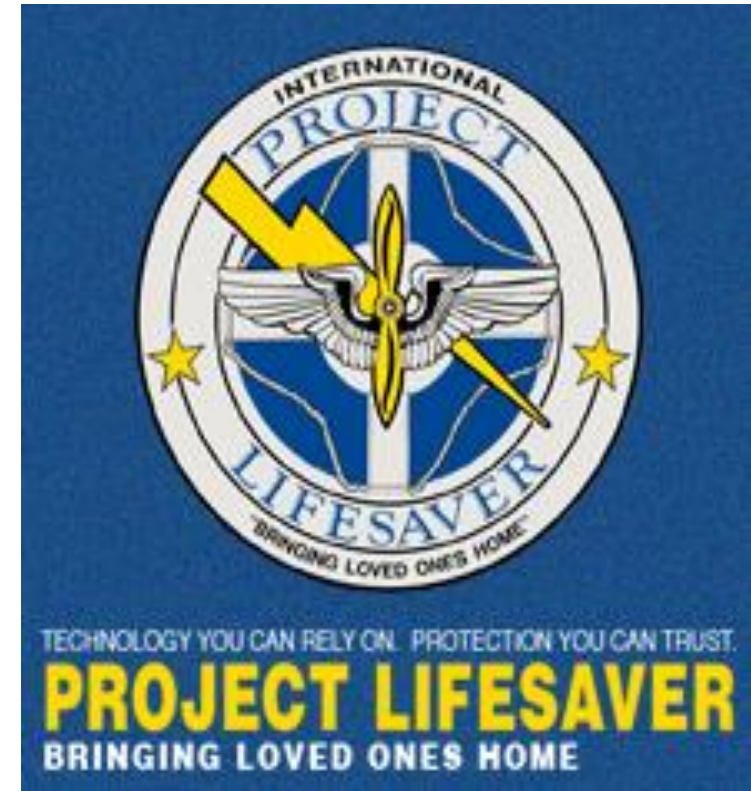
772-446-1271

## **RF Equipment, Operations and Training**

815 Battlefield Blvd. South

Chesapeake, VA 23322

757-546-5502 / 1-877-580-LIFE



# Frontline Education

- The Center has recently started using Frontline Education, an online learning management system that provides easy access to a catalog of online trainings offered by The Center
- Assists with maintaining compliance; keeps staff members engaged and connected; allows for motivated people to advance their knowledge and careers

# Frontline Education

- Each staff member is provided with an Frontline Education account, allowing them and their supervisors to easily track all online and in-person trainings they enroll in and complete
- Transcripts listing all completed trainings can be printed at any time

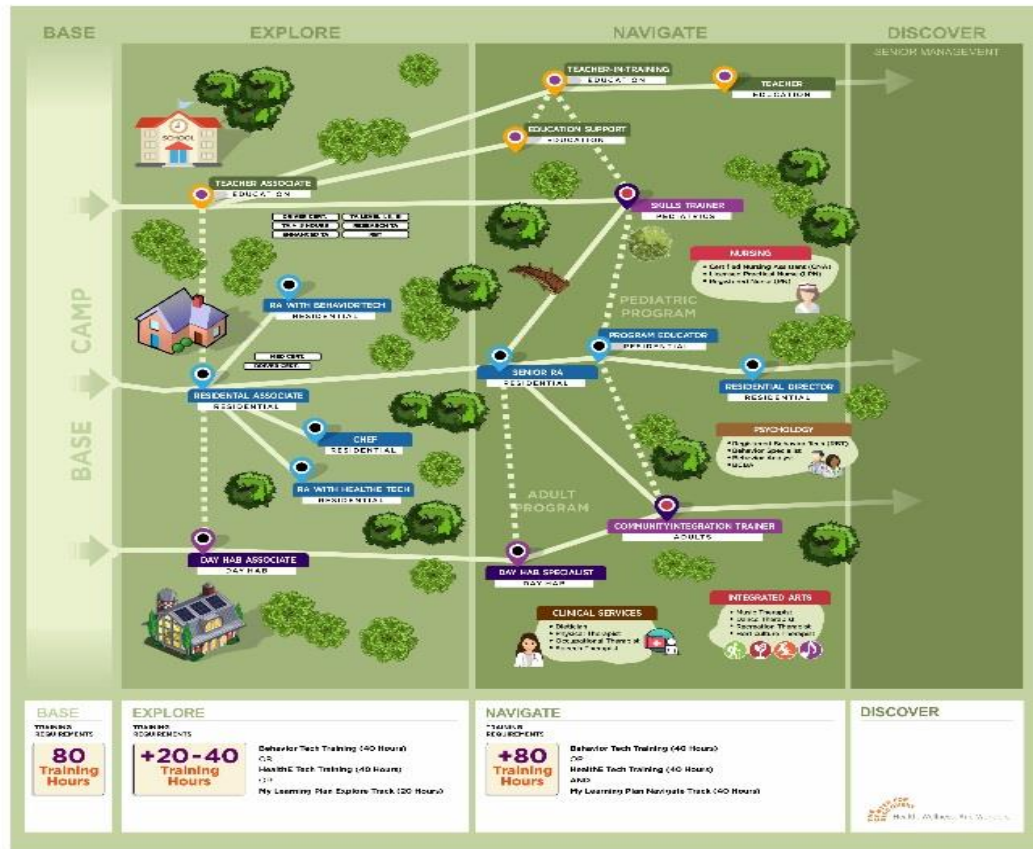
# Frontline Education

- Many other professional development resources are available via The Center's internal website for staff – including an interactive career map and a series of videos of staff describing their journeys through multiple positions here at The Center
- Training plans (currently under development) outline the required and optional training courses needed in order to be eligible for promotion into various positions



# Frontline Education

TCFD Career Map



Technology and QI/CC

Thank You

Jaclyn McKenna, BA  
Chief of QI/CC and Adult Continuous Program Development  
The Center for Discovery

If there are any questions and comments,  
please feel free to reach out to me at  
[jmckenna@tcfcd.org](mailto:jmckenna@tcfcd.org)