

2017 CP OF NYS ANNUAL CONFERENCE SPEAKERS

~Contact Information & Presentations (if available)~

If you have not already done so, please click [HERE](#) to complete an overall conference evaluation survey.

Elaine M. Angelo

Performance Consultant
ProKnowledge LLC
21 British American Blvd.
Latham, NY 12110
518-786-1338 ♦
eangelo@proknowledgetraining.com



CLICK THE LINKS BELOW FOR FOR HANDOUTS FROM:

- 1) [Navigating the Multi-Generational Workplace - Parts 1 & 2](#)
- 2) [Exploring Your Emotional Intelligence](#)

[Session Evaluation Form \(Tues.\)](#)

Ray Babowicz

Director of Marketing & Communications
CP of the North Country
4 Commerce Lane
Canton, NY 13617
(315) 386-1156 ♦ rbabowicz@cpnorthcountry.org
Development/PR Panel Discussion

[Session Evaluation Form \(Tues.\)](#)

Ronald Bass

Director, Bureau of Policy Development
NYS Department of Health
99 Washington Avenue, Room 720
Albany, NY 12210
518-408-5358

CLICK HERE FOR HANDOUTS FROM:

Telemedicine Service for Better Care in the OPWDD Residential Program

[Session Evaluation Form \(Tues.\)](#)

Tamika R. Black

Deputy Commissioner, Division of Quality Improvement
NYS OPWDD
44 Holland Avenue
Albany, NY 12229
518-474-3625
Myth Busters: What is Really Required by OPWDD and the Justice Center

[Session Evaluation Form \(Mon.\)](#)

Mary Boatfield

President & CEO
CP Rochester / Happiness House
3399 Winton Road South
Rochester, NY 14623
(315) 789-6828 ♦ mboatfield@happinesshouse.org
CCO's Across NYS -- Panel Discussion

[Session Evaluation Form \(Mon.\)](#)

Dan Brown

Executive Director
Franziska Racker Centers
3226 Wilkins Road
Ithaca, NY 14850
(607) 272-5891 ♦ danb@rackercenters.org
Retaining Employees: Ideas and Innovations

[Session Evaluation Form \(Mon.\)](#)

Anne Buechner

Quality Enhancement Specialist
The Council on Quality and Leadership
100 West Road, Suite 300
Towson, MD 21204
410-583-0060
abuechner@thecouncil.org



- 1) ***Person Centered Thinking: Strategies & Tools for Success***
- 2) ***Supporting Decision Making***

[Session Evaluation Form \(Tues.\)](#)

Donna Cater

Director, Division of Finance & Rate Setting
NYS Department of Health
One Commerce Plaza, Suite 1450
Albany, NY 12260
(518) 486-7164
An Update on OPWDD Rate Setting / Minimum Wage

[Session Evaluation Form \(Tues.\)](#)

2017 CP OF NYS ANNUAL CONFERENCE SPEAKERS

~Contact Information & Presentations (if available)~

If you have not already done so, please click [HERE](#) to complete an overall conference evaluation survey.

Nancy Champlin

Administrative Director, Adult Services
Center for Disability Services
314 South Manning Boulevard
Albany, NY 12208

518-724-7703 ♦ champlin@cfdnsny.org



CLICK THE LINKS BELOW FOR HANDOUTS FROM:

***Levels of Support – We are Direct Support Professionals
Not Direct Supervision Professionals***

- [Part 1](#)
- [Part 2](#)
- [Part 3](#)

[Session Evaluation Form \(Tues.\)](#)

Anne Costigan

Deputy Director of Foundation
Center for Disability Services
314 South Manning Boulevard
Albany, NY 12208

(518) 944-2121 ♦ schneider@cfdnsny.org

Development/PR Panel Discussion

[Session Evaluation Form \(Tues.\)](#)

Jeremy Cottle

Research Project Coordinator
Upstate Cerebral Palsy
1020 Mary Street
Utica, NY 13501
(315) 507-2081



jeremy.cottle@upstatecp.org

***The Impact of Yoga on Students with Complex Autism
Spectrum Disorders***

[Session Evaluation Form \(Tues.\)](#)

Jerry Daniele

Chef
Ace Endico
80 International Blvd.
Brewster, NY 10509
jdaniele@aceendico.com

Affiliates IMAGINE: Innovative Programs

[Session Evaluation Form \(Tues.\)](#)

Laura Darman

Executive Deputy Director
NYS Justice Center for the Protection
of People with Special Needs
161 Delaware Avenue
Delmar, NY 12054
518-549-0307



***Myth Busters: What is Really Required by OPWDD and the
Justice Center***

[Session Evaluation Form \(Mon.\)](#)

Tawana Davis

Director of Quality Improvement
Center for Disability Services
314 South Manning Boulevard
Albany, NY 12208
518-437-5689 ♦ t_payton@cfdnsny.org



Consideration of Others/Diversity Program - Parts 1 & 2

[Session Evaluation Form \(Tues.\)](#)

Matthew Debique, MA

Behavior Intervention Specialist 1
Cerebral Palsy Associations of NYS
330 West 34th Street, 15th Floor
New York, NY 10001
(212) 947-5770, Ext. 272 ♦ mdebique@cpofnys.org

CLICK HERE FOR HANDOUTS FROM:

***The Behavior Intervention Specialist: Spearheading the
Team Approach with Person Centered Planning with
People with I/DD and Dementia***

[Session Evaluation Form \(Tues.\)](#)

Hon. Kerry A. Delaney

Acting Commissioner
NYS OPWDD
44 Holland Avenue
Albany, NY 12229
(518) 473-1997



Commissioner's Update

[Session Evaluation Form \(Mon.\)](#)

2017 CP OF NYS ANNUAL CONFERENCE SPEAKERS

~Contact Information & Presentations (if available)~

If you have not already done so, please click [HERE](#) to complete an overall conference evaluation survey.

David R. Donnelly, Ph.D.

Licensed Behavior Analyst
University of Rochester
525 Clarks Run Road
La Plata, MD 20646
ddonnelly@warner.rochester.edu



[CLICK HERE FOR HANDOUTS FROM:](#)

Trauma Informed Care Through the Lens of Applied Behavior Analysis

[Session Evaluation Form \(Tues.\)](#)

Joseph Dutkowsky

Member, Board of Directors
CP of NYS
(607) 547-6672 ♦ jdutkowsky@yahoo.com

Direct From Lincoln Center, It's the New York City Ballet!

[Session Evaluation Form \(Mon.\)](#)

Mick Ebeling

Founder & CEO
Not Impossible Labs
628 California Avenue
Venice, CA 90291
speaking@notimpossiblelabs.com



Monday Keynote: The Fallacy of Impossible

[Session Evaluation Form \(Mon.\)](#)

Azimah P. Ehr, MD

Medical Director
CP of NYS Metro Services
330 West 34th Street, 15th Floor
New York, NY 10001
212-947-5770 ♦ aehr@cpofnys.org

Telemedicine Service for Better Care in the OPWDD Residential Program

[Session Evaluation Form \(Tues.\)](#)

Jess Evans

Program Manager for Community Habilitation
AccessCNY
1603 Court Street
Syracuse, NY 13208
315-455-7591 ♦ jevans@accesscny.org



CP Affiliate Program Models: Taking Community Integration From Concept to Reality

[Session Evaluation Form \(Wed.\)](#)

Leslie Fuld

Director, Incident Management Unit
NYS OPWDD
44 Holland Avenue
Albany, NY 12229
518-474-3625

Myth Busters: What is Really Required by OPWDD and the Justice Center

[Session Evaluation Form \(Mon.\)](#)

Meghan Gentile

Associate Director of Education
New York City Ballet
♦

Direct From Lincoln Center, It's the New York City Ballet!

[Session Evaluation Form \(Mon.\)](#)

Margaret J. (Peg) Gould

Director, Training Collaborative
ADAPT Community Network
80 Maiden Lane, 8th Floor
New York, NY 10038
(212) 683-6700, Ext. 1706
pgould@adaptcommunitynetwork.org



1) Retaining Employees: Ideas and Innovations

[Session Evaluation Form \(Mon.\)](#)

2) Creative Solutions to Build Staff Competencies

[Session Evaluation Form \(Tues.\)](#)

2017 CP OF NYS ANNUAL CONFERENCE SPEAKERS

~Contact Information & Presentations (if available)~

If you have not already done so, please click [HERE](#) to complete an overall conference evaluation survey.

Thomas Hamel

Vice President, Financial Management & Support
CP of NYS
3 Cedar Street Extension, Suite 2
Cohoes, NY 12047
518-436-0178 ♦ thamel@cpofnys.org

[CLICK HERE FOR HANDOUTS FROM:](#)

Financial Indicators/Management Update

[Session Evaluation Form \(Tues.\)](#)

Theresa Hamlin, Ed.D.

Associate Executive Director
The Center for Discovery
PO Box 840
Harris, NY 12742
(845) 707-8480 ♦ thamlin@tcfcd.org

[CLICK HERE FOR HANDOUTS FROM:](#)

Understanding the Complexities of Autism



[Session Evaluation Form \(Tues.\)](#)

Jason Helgeson

Medicaid Director
NYS Department of Health
99 Washington Avenue, Suite 1211
Albany, NY 12210
(518) 474-3018

[CLICK BELOW FOR HANDOUTS FROM:](#)

The State & National Medicaid Landscape

[Session Evaluation Form \(Mon.\)](#)



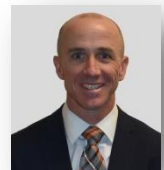
Erik Jacobson, Ph.D.

Chief Psychologist
Upstate Cerebral Palsy
1020 Mary Street
Utica, NY 13501
(315) 507-2081, Ext. 225
erik.jacobson@upstatecp.org

[CLICK THE LINK BELOW FOR HANDOUTS FROM:](#)

- 1) *Understanding the Complexities of Autism*
- 2) *The Impact of Yoga on Students with Complex Autism Spectrum Disorders*

[Session Evaluation Form \(Tues.\)](#)



Klonette Johnson, MA

Behavior Intervention Specialist
Cerebral Palsy Associations of NYS
330 West 34th Street, 15th Floor
New York, NY 10001
(718) 447-8205, Ext. 1396 ♦ kjohnson@cpofnys.org

[CLICK HERE FOR HANDOUTS FROM:](#)

The Behavior Intervention Specialist: Spearheading the Team Approach with Person Centered Planning with People with I/DD and Dementia

[Session Evaluation Form \(Tues.\)](#)

Andrelle Julien, MA

Behavior Intervention Specialist 1
Cerebral Palsy Associations of NYS
330 West 34th Street, 15th Floor
New York, NY 10001
(212) 947-5770, Ext. 385 ♦ ajulien@cpofnys.org

[CLICK HERE FOR HANDOUTS FROM:](#)

The Behavior Intervention Specialist: Spearheading the Team Approach with Person Centered Planning with People with I/DD and Dementia

[Session Evaluation Form \(Tues.\)](#)

Matthew Kaufman, MD

CEO
Station MD
1812 Front Street
Scotch Plains, NJ 07076
908-663-2929
matthew.kaufman@stationmd.com

Telemedicine Service for Better Care in the OPWDD Residential Program

[Session Evaluation Form \(Tues.\)](#)



Joan Kennerson King

Senior Consultant, Integrated Health
The National Council for Behavioral Health
1400 K Street NW, Suite 400
Washington, DC 20005
JOANK@THENATIONALCOUNCIL.ORG

Care Management to Case Management

[Session Evaluation Form \(Mon.\)](#)



2017 CP OF NYS ANNUAL CONFERENCE SPEAKERS

~Contact Information & Presentations (if available)~

If you have not already done so, please click [HERE](#) to complete an overall conference evaluation survey.

Alan Krafchin

President & CEO
Center for Disability Services
22 Corporate Woods Blvd., 5th Floor
Albany, NY 12211
(518) 944-2100 ♦ krafchin@cfdnsny.org
CCO's Across NYS -- Panel Discussion

[Session Evaluation Form \(Mon.\)](#)

Marilyn Ladewig

Speech Language Pathologist
CP of NYS Metro Services
330 West 34th Street, 15th Floor
New York, NY 10001
212-947-5770 ♦ mladewig@cpofnys.org



*Increasing Functional Mobility & Communications
Through OT/SLP Co-Treatment: A Case Study*

[Session Evaluation Form \(Tues.\)](#)

Lynn Lakner

Training Assistant Director
CP of NYS
330 West 34th Street, 15th Floor
New York, NY 10001
(212) 947-5770 ♦ llakner@cpofnys.org
Creative Solutions to Build Staff Competencies

[Session Evaluation Form \(Tues.\)](#)

Christine Lalka

Coordinator of Employment Services
Aspire of WNY
2356 North Forest Road
Getzville, NY 14068
716-836-7235 ♦ clalka@aspirewny.org
*CP Affiliate Program Models: Taking Community
Integration From Concept to Reality*

[Session Evaluation Form \(Wed.\)](#)

Richard Landau

Shareholder
Jackson Lewis, P.C.
44 South Broadway
White Plains, NY 10601
914-872-6886 ♦ LandauR@jacksonlewis.com
*Social Media - When Can Agencies Use It In Making Hiring,
Discipline and Termination Decisions*



[Session Evaluation Form \(Mon.\)](#)

Brianna Lanoye

Teacher/Actor, Spectrum Theater Program
Empower
9812 Lockport Road
Niagara Falls, NY 14304
716-297-0798 ♦ blanoye@empower-wny.org
Affiliates: IMAGINE

[Session Evaluation Form \(Tues.\)](#)

Michelle Laporta

Program Administrator
Center for Disability Services
314 South Manning Boulevard
Albany, NY 12208
518-738-0020, Ext. 1826 ♦ laporta@cfdnsny.org
CLICK THE LINKS BELOW FOR HANDOUTS FROM:
*Levels of Support – We are Direct Support Professionals
Not Direct Supervision Professionals*



- [Part 1](#)
- [Part 2](#)
- [Part 3](#)

[Session Evaluation Form \(Tues.\)](#)

Ashley Laracey

Soloist
New York City Ballet
♦

Direct From Lincoln Center, It's the New York City Ballet!

[Session Evaluation Form \(Mon.\)](#)

2017 CP OF NYS ANNUAL CONFERENCE SPEAKERS

~Contact Information & Presentations (if available)~

If you have not already done so, please click [HERE](#) to complete an overall conference evaluation survey.

Esu Ma'at

Sr. Manager, Diversity and Inclusion
USTA Eastern
70 West Red Oak Lane
White Plains, NY 10604
914-697-2273 ♦ maat@eastern.usta.com



[CLICK HERE FOR HANDOUTS FROM:](#)

U.S. Tennis Association/Recreation Sports

[Session Evaluation Form \(Tues.\)](#)

Debbie M. Major

CEO
Zylofone
26 Eager Road
Montgomery, NY 12549
(845) 476-8257 ♦ debmajor22@gmail.com
Zylofone - Why Is It Spelled Like That?



[Session Evaluation Form \(Mon.\)](#)

Edward Matthews

President & CEO
ADAPT Community Network
80 Maiden Lane, 8th Floor
New York, NY 10038
(212) 683-6700 ♦
ematthews@adaptcommunitynetwork.org
CCO's Across NYS -- Panel Discussion

[Session Evaluation Form \(Mon.\)](#)

Maureen McSwiggan-Hardin

Doctor of Nursing Practice and Nurse Practitioner in
Psychiatry
The Center for Discovery
606 Old Route 17
Harris, NY 12701
(845) 707-8514 ♦ mmcswiggan-hardin@tcfd.org
*Psychotropic Polypharmacy in Individuals with Autism
Spectrum Disorder in Residential Settings*

[Session Evaluation Form \(Tues.\)](#)

Janice Miller

Vice President for Services in
Manhattan & Staten Island
CP of NYS Metro Services
330 West 34th Street, 15th Floor
New York, NY 10001
212-947-5770 ♦ jmillier@cpofnys.org
*Telemedicine Service for Better Care in the OPWDD
Residential Program*



[Session Evaluation Form \(Tues.\)](#)

Denise Miranda

Executive Director
NYS Justice Center for the Protection
of People with Special Needs
161 Delaware Avenue
Delmar, NY 12054
(518) 549-0200 ♦ denise.miranda@justicecenter.ny.gov
*Myth Busters: What is Really Required by OPWDD and the
Justice Center*



[Session Evaluation Form \(Mon.\)](#)

Sharon Moore

Program Director for Community
Habilitation & Self-Directo
AccessCNY
1603 Court Street
Syracuse, NY 13208
315-455-7591 ♦ smoore@accesscny.org
*CP Affiliate Program Models: Taking Community
Integration From Concept to Reality*



[Session Evaluation Form \(Wed.\)](#)

James Moran

CEO
Care Design LLC
3 Cedar Street Extension, Suite 2
Cohoes, NY 12047
518-436-0178 ♦ jmoran@caredesignny.com
[CLICK HERE FOR HANDOUTS FROM:](#)
Financial Indicators/Management Update

[Session Evaluation Form \(Tues.\)](#)

2017 CP OF NYS ANNUAL CONFERENCE SPEAKERS

~Contact Information & Presentations (if available)~

If you have not already done so, please click [HERE](#) to complete an overall conference evaluation survey.

Bobby Newman, Ph.D.

Director
Room To Grow
611 West Walnut Street
Long Beach, NY 11561
(516) 213-3338
darkoverlordaba@prodigy.net



Sexuality/Sex Education for Adolescents & Young Adults with I/DD

[Session Evaluation Form \(Tues.\)](#)

Sharon O'Brien, MS, OTR/L, PTA, ATP

Cerebral Palsy of Long Island
380 Washington Avenue
Roosevelt, NY 11804
516-378-2000 ♦ sobrien@cpnassau.org

Bio Mechanics of Seating and Mobility

[Session Evaluation Form \(Tues.\)](#)

Matthew Parascando

Senior Coordinator of Operations
ADAPT Community Network
80 Maiden Lane, 8th Floor
New York, NY 10038
(212) 683-6700
mparascando@adaptcommunitynetwork.org
Creative Solutions to Build Staff Competencies

[Session Evaluation Form \(Tues.\)](#)

John J. Ratey, MD

Associate Clinical Professor of Psychiatry
Harvard Medical School
328 Broadway
Cambridge, MA 2139
617-547-6952 ♦ john@johnratey.com



TUESDAY KEYNOTE ADDRESS

"Exercise: The Perfect Tonic for the Brain at Every Age!"

[Session Evaluation Form \(Tues.\)](#)

Jackie Richards

Director of Quality Improvement
Center for Disability Services
314 South Manning Boulevard
Albany, NY 12208
518-437-5604 ♦ richards@cfdnsny.org



CLICK THE LINKS BELOW FOR HANDOUTS FROM:

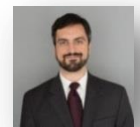
***Levels of Support – We are Direct Support Professionals
Not Direct Supervision Professionals***

- [Part 1](#)
- [Part 2](#)
- [Part 3](#)

[Session Evaluation Form \(Tues.\)](#)

Jack Rollins

Senior Policy Analyst
National Association of
Medicaid Directors (NAMD)
444 North Capitol Street, Suite 524
Washington, DC 20001
(202) 403-8628 ♦ jack.rollins@medicaiddirectors.org



The State & National Medicaid Landscape

[Session Evaluation Form \(Mon.\)](#)

Joan Sicard

Division of Program Development & Management
Bureau of Medical, Dental & Pharmacy Policy
NYS Department of Health
Corning Tower (OCP 720)
Albany, NY 12237
518-473-2160

CLICK HERE FOR HANDOUTS FROM:

***Telemedicine Service for Better Care in the OPWDD
Residential Program***

[Session Evaluation Form \(Tues.\)](#)

Deborah Snow

Occupational Therapist
CP of NYS Metro Services
330 West 34th Street, 15th Floor
New York, NY 10001
212-947-5770 ♦ dsnow@cpofnys.org



***Increasing Functional Mobility & Communications
Through OT/SLP Co-Treatment: A Case Study***

[Session Evaluation Form \(Tues.\)](#)

2017 CP OF NYS ANNUAL CONFERENCE SPEAKERS

~Contact Information & Presentations (if available)~

If you have not already done so, please click [HERE](#) to complete an overall conference evaluation survey.

Robin Stevens

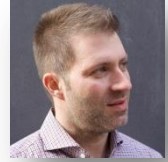
Spectrum Theater Program
Empower
9812 Lockport Road
Niagara Falls, NY 14304
716-297-0798 ♦ rstevens@empower-wny.org

Affiliates IMAGINE: Innovative Programs

[Session Evaluation Form \(Tues.\)](#)

Adam Stofsky

CEO
LawHub
Valatie, NY 12184
adam@thelawhub.net

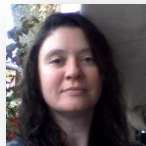


- 1) ***Why You Need to be a More Effective and Powerful Advocate***
- 2) ***Storytelling Using Video and Social Media***

[Session Evaluation Form \(Tues.\)](#)

Toni Sullivan

Facilitator of Pre-Employment Services
Aspire of WNY
2356 North Forest Road
Getzville, NY 14068
716-505-5500 ♦ tsullivan@aspirewny.org



CP Affiliate Program Models: Taking Community Integration From Concept to Reality

[Session Evaluation Form \(Wed.\)](#)

Christopher Suriano

Assistant Commissioner
New York State Education Department
89 Washington Avenue, 301M
Albany, NY 12234
(518) 402-3353



Improving Outcomes for Students with Disabilities: Priorities, Resources, and Updates

[Session Evaluation Form \(Tues.\)](#)

Thomas Sy

President & CEO
Aspire of WNY
2356 North Forest Road
Getzville, NY 14068
(716) 324-2744 ♦ thomas.sy@aspirewny.org
CCO's Across NYS -- Panel Discussion

[Session Evaluation Form \(Mon.\)](#)

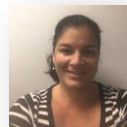
Louis Tehan

President & CEO
Upstate Cerebral Palsy
1020 Mary Street
Utica, NY 13501
(315) 724-6907 ♦ louis.tehan@upstatecp.org
CCO's Across NYS -- Panel Discussion

[Session Evaluation Form \(Mon.\)](#)

Patricia Tomanelli

Psychology Coordinator
Developmental Disabilities Institute
99 Hollywood Drive
Smithtown, NY 11787
(631) 366-2976 ♦ patricia.tomanelli@ddiny.org



***CLICK BELOW FOR HANDOUTS FROM:
Understanding the Complexities of Autism***

[Session Evaluation Form \(Tues.\)](#)

Petra Tuomi

Vice President, Marketing and Communications
ADAPT Community Network
80 Maiden Lane, 8th Floor
New York, NY 10038
(212) 683-6700, Ext. 1292
ptuomi@adaptcommunitynetwork.org
Development/PR Panel Discussion

[Session Evaluation Form \(Tues.\)](#)

2017 CP OF NYS ANNUAL CONFERENCE SPEAKERS

~Contact Information & Presentations (if available)~

If you have not already done so, please click [HERE](#) to complete an overall conference evaluation survey.

<p>Kevin Valenchis Deputy Commissioner NYS OPWDD 44 Holland Avenue Albany, NY 12229 518-474-8214 CLICK HERE FOR HANDOUTS FROM: <i>Executive Directors & Finance Director's Lunch</i></p> <p>Session Evaluation Form (Tues.)</p>	<p>Jayne Wagner Vice President, Business Development OPTUM 11000 Optum Circle Eden Prairie, MN 55344 (937) 642-6970 ♦ jayne.wagner@optum.com <i>Managed Care for People with I/DD: Experiences Across The Nation</i></p> <p>Session Evaluation Form (Tues.)</p>
<p>Dirome Williamson Program Operations Specialist Center for Disability Services 314 South Manning Boulevard Albany, NY 12208 518-437-5745 ♦ williamson@cfdnsny.org <i>Consideration of Others/Diversity Program - Parts 1 & 2</i></p>  <p>Session Evaluation Form (Tues.)</p>	<p>Lisa Wilson Coordinator of Day Treatment CP of Ulster County PO Box 1488 Kingston, NY 12402 845-336-7235 ♦ lwilson@cpulster.org <i>CP Affiliate Program Models: Taking Community Integration From Concept to Reality</i></p> <p>Session Evaluation Form (Wed.)</p>
<p>Bobbi Jo Yeager Vice President of Workforce Development ADAPT Community Network 80 Maiden Lane, 8th Floor New York, NY 10038 (212) 683-6700 byeager@adaptcommunitynetwork.org <i>Retaining Employees: Ideas and Innovations</i></p> <p>Session Evaluation Form (Mon.)</p>	